

User Manual

JT9 Jib trolley



Original instructions

Serial no.:

Delivery date:

Reference: U.JT9.00.00.EN

Version: 1.0

Table of Contents

Revision control	i
Property rights	i
Preface	ii
General terms & conditions	ii
Warranty and liability	ii
Target audience	iii
Warning icons	iii
Structure of the user manual	iii
1. Introduction	1
1.1 Intended use	1
1.2 Unintended use	1
1.3 Type plate	1
2. Safety	3
2.1 Introduction	3
2.2 Personnel	3
2.3 During setup	4
3. Technical data	5
3.1 Specifications	5
3.2 Dimensions	5
4. Description	7
4.1 Main components	7
5. Installation	9
5.1 Prepare the trolley	9
5.2 Prepare the jib	10
6. Operation	11
6.1 Put the hook in the trolley	11
6.2 Put the winch head in the trolley	11
6.3 Put the jib in the trolley	12
6.4 Lifting the trolley	13
6.4.1 Lifting vertically	13
6.4.2 Lifting horizontally	13
7. Maintenance	15
8. Troubleshooting	17
8.1 Troubleshooting the trolley	17

9. Transport and storage	19
9.1 Putting the trolley in storage	19
9.2 Storage positions	19
9.2.1 Without jib.	19
9.2.2 With jib	20
10. Disposal	21

REVISION CONTROL

Revision	Publication date	Comments	From serial number
1.0	01-04-2025		2000-1896

MANUFACTURER

Hoeflon International B.V.
Zwolleweg 2
3771 NR Barneveld
www.hoeflon.com

General inquiries

T: +31(0) 342 400 288
E: info@hoeflon.com

Technical support

E: support@hoeflon.com

PROPERTY RIGHTS

All rights reserved. No part of this publication may be reproduced, kept in a storage system, or transmitted in any form or by any means (electronically or mechanically, including photocopying, recording or otherwise) without the prior written permission of Hoeflon International B.V. This also applies to the accompanying drawings and charts.

© Copyright 2025

PREFACE

Thank you for buying the Hoeflon JT9 Jib trolley. We hope that you enjoy using it and that you will enjoy using it for many years to come.

This user manual contains the operating instructions for the Hoeflon JT9 Jib trolley. In this user manual we will refer to it as the trolley.

Read this user manual carefully to familiarize yourself with the correct operation and maintenance of the trolley. The figures in this document are for illustration purposes only and can be different from the trolley in your situation.

Hoeflon International B.V. recommends that you keep the original copy of this user manual, including all the annexes, in a safe, central place. Keep a copy of this user manual near the machine at the workplace.

General terms & conditions

In all cases, Hoeflon International B.V. delivers the machine exclusively according to the General Terms and Conditions applicable at the time of purchase. These General Terms and Conditions can be found on the website www.hoeflon.com.

Although Hoeflon International B.V. has made every reasonable effort to make sure that this user manual is as accurate and helpful as possible, Hoeflon International B.V. does not provide any guarantees with regard to the accuracy or completeness of the information provided herein.

Hoeflon International B.V. is committed to keeping the information in this user manual complete, accurate and up to date. Hoeflon International B.V. accepts no liability for the consequences of errors, except in the case of willful intent or deliberate recklessness on the part of Hoeflon International B.V..

Hoeflon International B.V. continuously develops and improves its products, we reserve the right to make changes to the technical design at any time without prior notice.

For technical support, please speak to your Hoeflon dealer or to Hoeflon Support B.V..

Warranty and liability

The Hoeflon JT9 Jib trolley conforms to the applicable basic safety and health requirements of the EU directives. It has been carefully tested for trouble-free use at the factory. If the trolley does have problems stop using the trolley and speak to your Hoeflon dealer or to Hoeflon Support B.V. immediately.

Do not use the trolley if:

Repair the trolley first.

Hoeflon International B.V. is not liable for any damage or injury resulting from:

- not obeying the instructions in this user manual,
- exceeding the factory specifications,
- not obeying the legal requirements.

Do not:

- modify the trolley,
- repair the trolley yourself,
- use unauthorized replacement parts.

Make sure that you maintain the trolley correctly as described in this user manual.

Target audience

This user manual is intended for everyone who works with or on the trolley.

Always stay safe in familiar and unfamiliar situations.

Warning icons

The instructions, recommendations and warnings in this user manual are accompanied by the following terms and pictograms. Read these instructions carefully.



Danger

Identifies a very dangerous situation which, if not prevented, can result in death or very bad injury.



Warning

Identifies a dangerous situation where there is a risk of bad injury.



Caution

Identifies a situation where equipment or property can be damaged; or if there is a risk of injury.



Note

Identifies important information to help you understand or adjust the equipment.

Structure of the user manual

Preface describes the purpose of the manual, general terms and conditions, warranty and liability, target audience and notes for the reader.

Introduction includes an introduction to the trolley.

Safety lists all the points the user needs to know to work safely with the trolley.

Technical data gives the dimensions and specifications of the trolley.

Description describes the main components of the trolley and the operation of its various components.

Installation gives information on attaching each component.

Operation gives operating instructions for the intended use of the trolley.

Maintenance gives information on the necessary maintenance.

Troubleshooting lists possible faults and how to solve them.

Transport and storage gives recommendations for transporting and putting the trolley in storage.

Disposal gives instructions for the disposal of the trolley.

1.

Introduction

1.1 Intended use

Only use the trolley for the Hoeflon jib 9.

Only use the trolley to put a jib in storage or to move a jib as described in this manual.

1.2 Unintended use

Do not use the trolley:

- to transport the jib with another vehicle,
- as a trailer behind another vehicle,

1.3 Type plate

A type plate containing the machine data is attached to the trolley.

Do not remove the type plate .

2.

Safety

2.1 Introduction

Make sure that you have read the manual of the compact crane and of the trolley and that you fully understand its contents.

Make sure that you understand and obey all applicable legal requirements on using the trolley before you start work.

When using the trolley:

- Obey all warnings and regulations.
- Obey all applicable national regulations about:
 - working with the trolley,
 - working conditions,
 - work safety.

Obey the general safety precautions in this chapter when using the trolley.

Always be aware of the weight of the components.

Only use the correct tools.

Keep the trolley clean.

2.2 Personnel



Note

Make sure that all personnel that works with the trolley has the necessary licenses and work permits as specified by your local laws on training and equipment competence.

**Caution**

Always use approved Personal Protective Equipment (PPE).

- Hardhat
- Safety shoes
- Gloves
- Safety glasses

All operating personnel must:

- be fit to do the task.
- be familiar with all the functions and attachments associated with the equipment.
- be at least 18 years of age.

Do not:

- be under the influence of narcotics or alcohol.

2.3 During setup

Use low gear and slow speed when you:

- put a jib in the trolley.
- remove a jib from the trolley.



Make sure that the trolley is on a flat and level surface.

Make sure that the breaks are engaged before putting or removing a jib from the trolley.

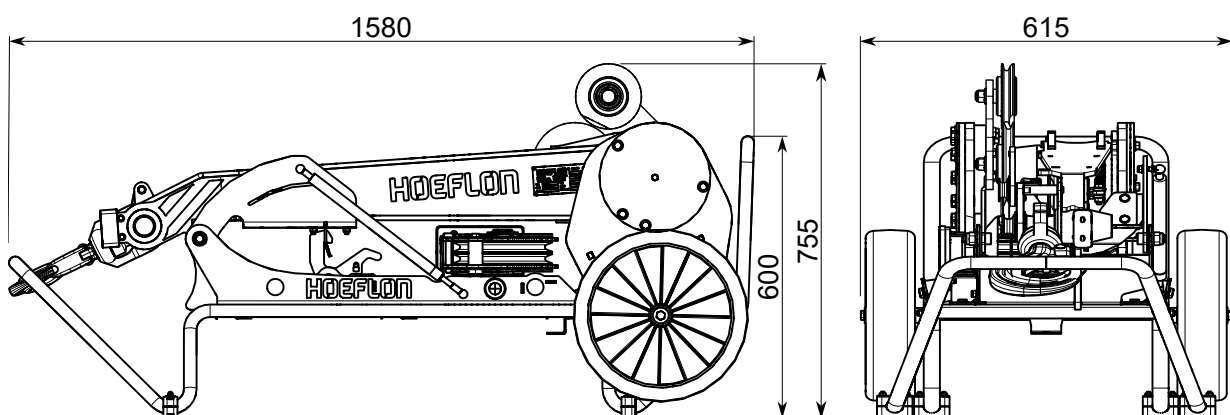
3.

Technical data

3.1 Specifications

Weight	41 kg
--------	-------

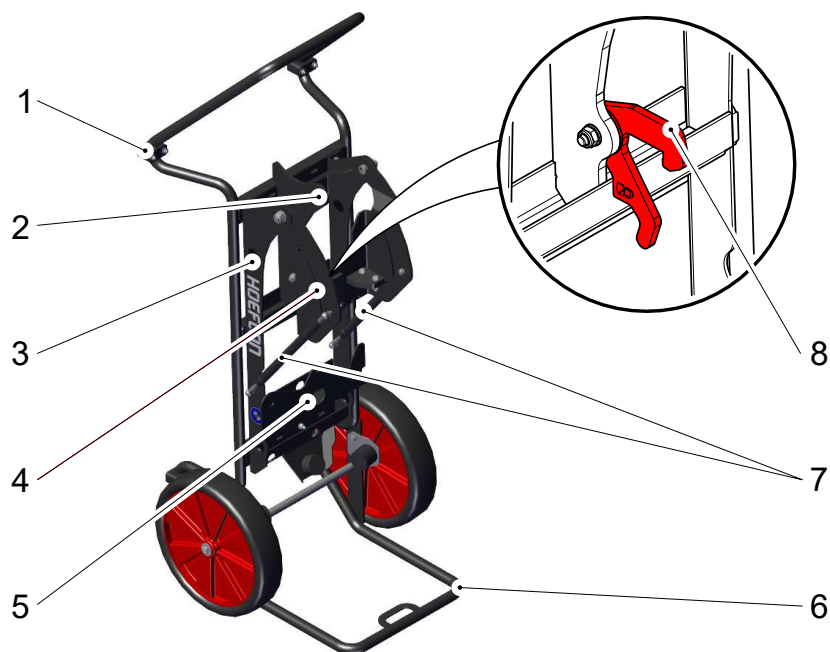
3.2 Dimensions



4.

Description

4.1 Main components



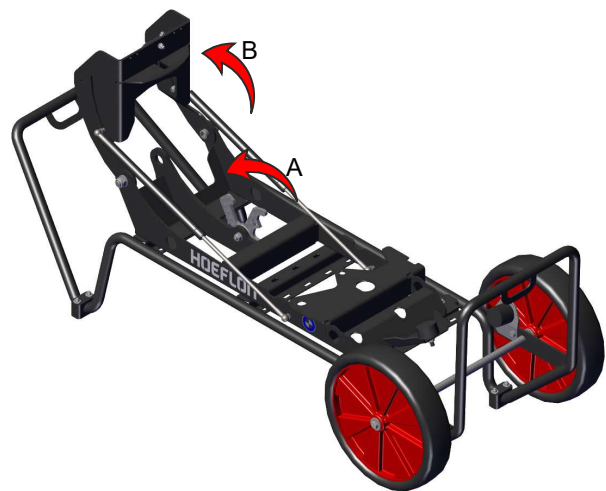
- | | |
|---|-------------------------------------|
| 1. Frame | 5. Holding plate for the winch head |
| 2. Jig clamp | 6. Standing base |
| 3. Holding frame for the jib | 7. Gas spring |
| 4. Adjustment slots for the gas springs | 8. Jib holding hook |

5.

Installation

5.1 Prepare the trolley

1. Put the trolley on a flat and stable surface.



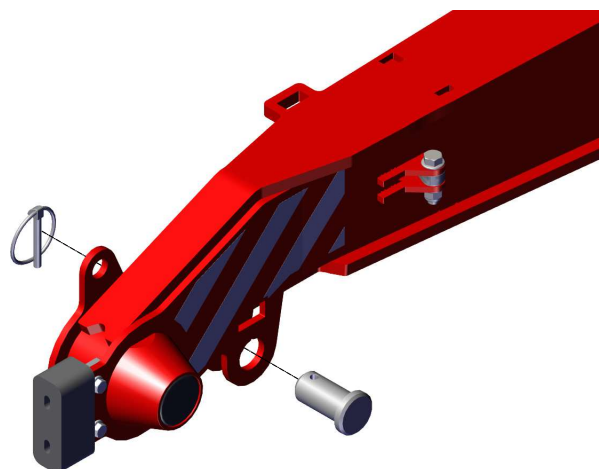
Caution

Make sure that the surface is strong enough to carry the weight of the trolley and the jib.

2. Release the latch that holds the holding frame for the jib in position (A).
3. Turn the holding frame for the jib so that it is vertical (B).

5.2 Prepare the jib

1. Remove the hook from the jib.
 - Put the hook in its storage position in the jib trolley (see 6.1 Put the hook in the trolley).
2. Remove the lynch pin from the locking pin at the tip of the jib.
3. Remove the locking pin.
4. Turn the jib into a vertical position.
 - Make sure that the tip points DOWN.

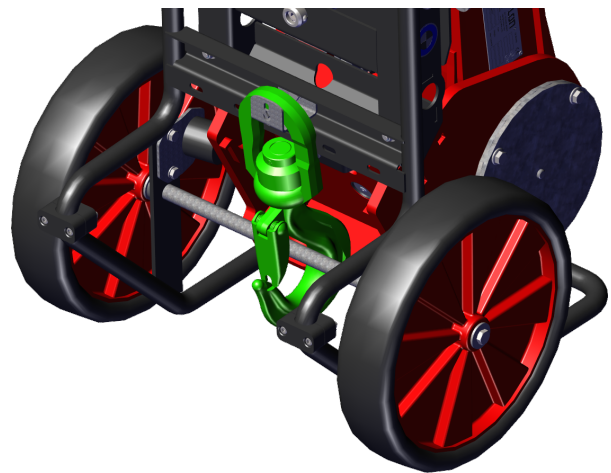


6.

Operation

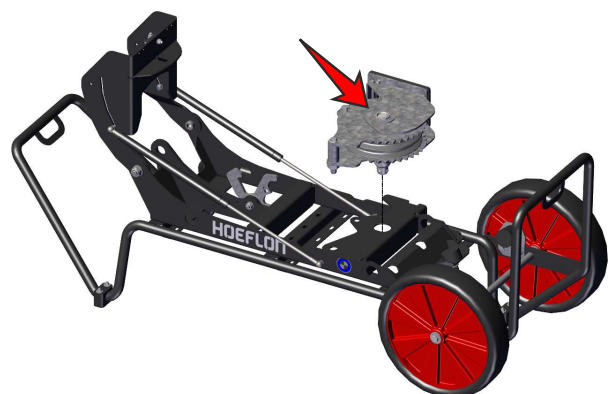
6.1 Put the hook in the trolley

1. Put the hook around the axle between the wheels
2. Put the shackle of the hook on the bracket.



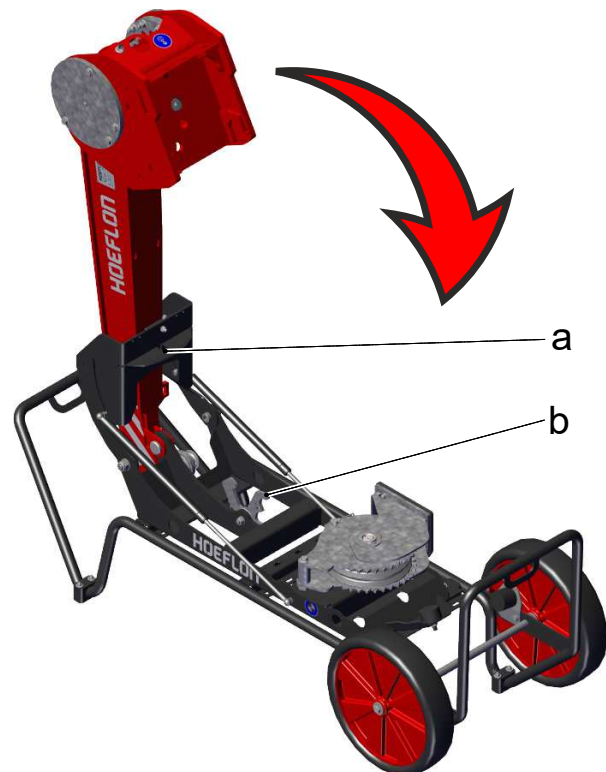
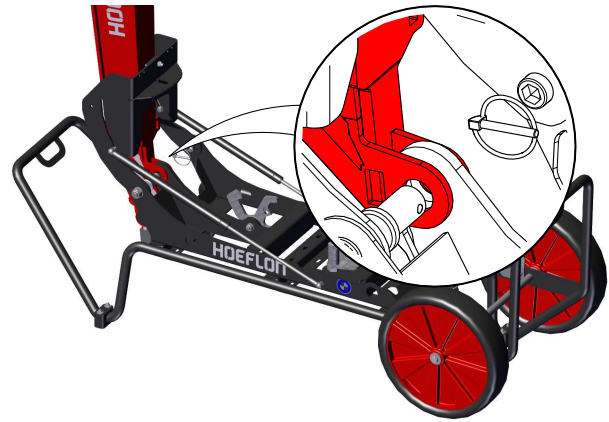
6.2 Put the winch head in the trolley

1. Remove the winch head from the jib.
 - Refer to the user manual of your jib.
2. Push the button in the center of the winch head.
3. Put the winch head in the trolley.
4. Release the button.



6.3 Put the jib in the trolley

1. Slowly move the jib into the carrier.
 - Make sure that the bracket on the trolley goes between the two brackets on the jib.
2. Put the pin through the bracket on the trolley.
 - Make sure that the pin also goes through the hole in the jib.
3. Lock the pin with the lynch pin.
4. Remove the jib from the crane.
 - Refer to the user manual of your crane.
5. Turn the jib down.
6. Turn the hook (a) into the latch plate (b).

**Caution**

Make sure that the hook is fully engaged in the latch plate.

6.4 Lifting the trolley

6.4.1 Lifting vertically

1. Put a sling around the handlebar of the trolley.

**Caution**

Make sure that the sling is correctly rated.

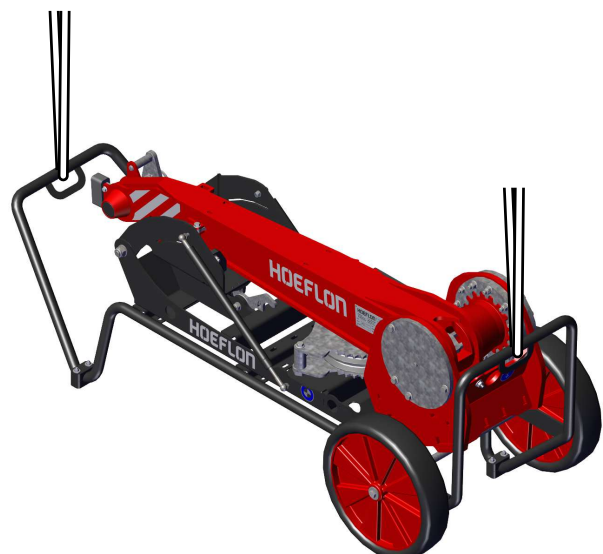
**Caution**

Make sure that the sling goes through the bracket in the handlebar.

The sling will slip if it does not go through the bracket.

6.4.2 Lifting horizontally

1. Put a sling around the handlebar of the trolley.
2. Put a sling around the base of the trolley.





Caution

Make sure that the slings are correctly rated.



Caution

Make sure that the slings go through the brackets in the handlebar and the base.

The sling will slip if it does not go through the bracket.

7.

Maintenance

There is no necessary maintenance for the trolley.

Make sure that the trolley is clean.

8.

Troubleshooting

8.1 Troubleshooting the trolley

Malfunction	Possible cause	Solution
The jib moves too fast when you lower the jib in the trolley.	A gas spring is broken.	Replace the gas spring.
A wheel does not turn.	The wheel is broken.	Replace the wheel.

9.

Transport and storage

9.1 Putting the trolley in storage

1. Fully clean the trolley.
2. Repair all damaged paintwork.
3. Apply a thin layer of grease to the parts that may rust.
4. Keep the trolley in a dry and cool area with good airflow.
5. Make sure that only approved persons are permitted to enter the storage area.

9.2 Storage positions

Put the trolley (with the jib) in storage in a vertical or a horizontal position.

9.2.1 Without jib.



9.2.2 With jib



10.

Disposal



Note

Refer to local regulations when you discard waste material.

There are no dangerous, harmful or environmentally hazardous materials in the trolley.

Take the trolley to your local recycling station when it is no longer serviceable.

